

# Center for Robots and Sensors for the Human Well-being

An NSF Industry/University Cooperative Research Center

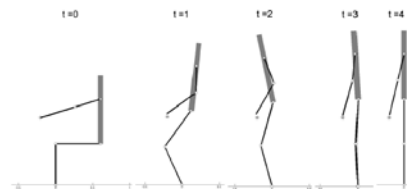
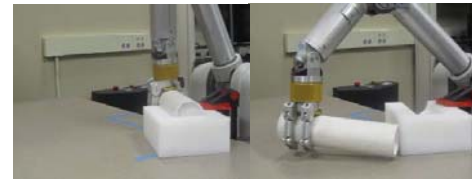


- ROSE-HUB is a multi-university National Science Foundation I/UCRC focused on robotics and sensing research in a wide range of industries, including healthcare, energy, transportation, manufacturing, material handling, homeland security, and emergency preparedness and response.
- ROSE-HUB is the ONLY I/UCRC focused on robotic and sensing technology for human safety and well-being.
- BENEFITS: Leverage member R&D budgets through substantial ROI in new technologies of common interest, Expand member R&D efforts by gaining access to royalty-free licenses, Expand member industry growth by strategic cooperation with other member industries, Access to experienced talent pool of students and faculty.
- MEMBERSHIP: Research is funded by membership fee. Full membership (recommended) of at least \$35,000. Affiliate membership of at least \$10,000.

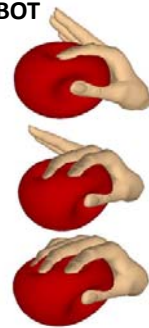
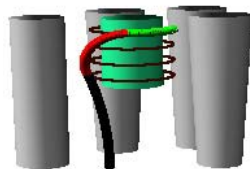
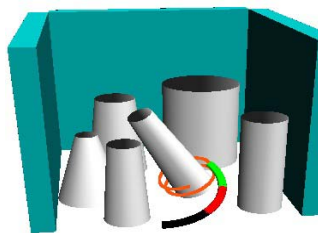


**AUTONOMOUS MANIPULATION & INSPECTION with a CONTINUUM ROBOT**

**REDUCING UNCERTAINTY in ROBOTIC SURFACE ASSEMBLY TASKS**



**PATIENT STABILITY and ASSISTANCE during SIT to STAND**



**HAPTIC GUIDANCE in VIRTUAL TRAINING**



**SURFACE-BASED GENERAL 3D DETECTION and POSE ESTIMATION**

FOR INFORMATION CONTACT Dr. Jing Xiao, Site Director ([xiao@unc.edu](mailto:xiao@unc.edu)), or Kathleen Elkins, Business Development Director ([kelkins@unc.edu](mailto:kelkins@unc.edu)) or (704) 995-7558.

